

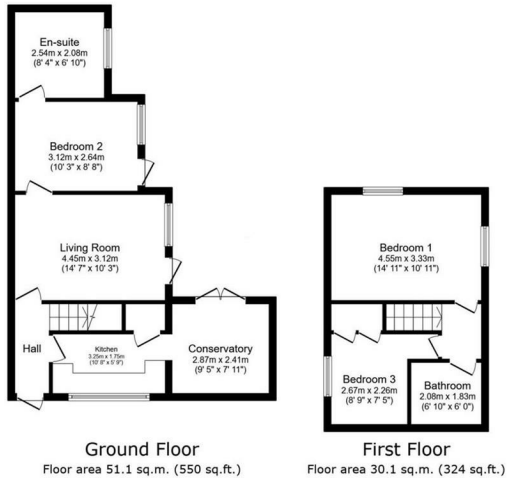


4 MUNDON ROAD, BRAINTREE CM7

GUIDE PRICE £250,000

3 Bedrooms | 2 Bathrooms | 1 Reception

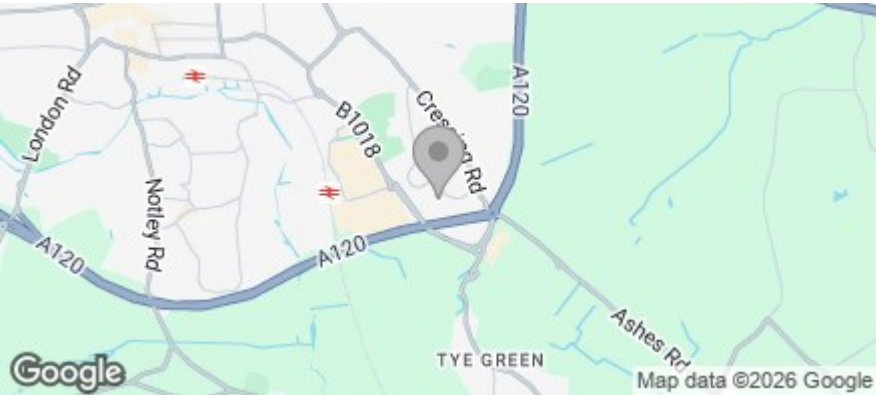
Floor Plan



Total floor area: 81.3 sq.m. (875 sq.ft.)

This floor plan is for illustrative purposes only. It is not drawn to scale. Any measurements, floor areas (including any total floor area), openings and orientations are approximate. No details are guaranteed, they cannot be relied upon for any purpose and do not form any part of any agreement. No liability is taken for any error, omission or misstatement. A party must rely upon its own inspection(s). Powered by www.propertybox.io

Area Map



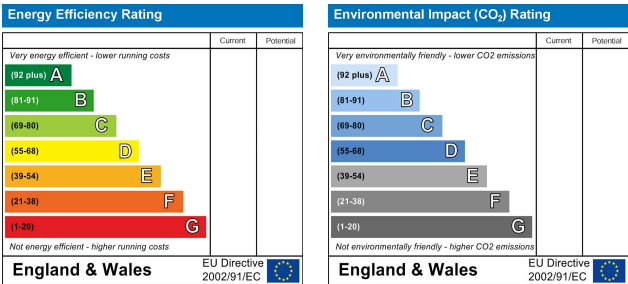
Accommodation

- THREE BEDROOMS
- WALKING DISTANCE TO LOCAL AMENITIES
- GROUND FLOOR BEDROOM WITH ENSUITE
- EASY ACCESS TO A120
- CLOSE TO LOCAL SCHOOLS
- LOW MAINTENANCE GARDEN
- IDEAL FIRST TIME PURCHASE
- DOUBLE GLAZED
- WALKING DISTANCE TO STATION
- OVERLOOKING GREENSWARD

Viewing

Please contact us on 01376 386555 if you wish to arrange a viewing appointment for this property, or require further information.

Energy Efficiency Graph



Phone: 01376 386555
Email: info@branocsestates.co.uk
Website: www.branocsestates.co.uk

Phoenix House 5 New Street
Braintree
Essex
CM7 1ER

Branocs endeavour to maintain accurate depictions of properties in Virtual Tours, Floor Plans and descriptions, however, these are intended only as a guide and purchasers must satisfy themselves by personal inspection.

